

Reference projects

Commercial & Industrial Buildings



Refurbishment «Haus zum Kiel», Zürich

The manor house «Haus zum Kiel» is located on Hirschengraben in Zurich and was built between the medieval city wall and the baroque redoubt. The listed building had to be refurbished., Zürich



Community apartment building, Gretzenbach

In the village center of Gretzenbach in the canton of Solothurn, a timber building with twelve apartments and a village store was built. The balconies cantilever over 3.5 meters - without any disruptive supports. An ingenious, suspended construction makes this possible., Gretzenbach



Facade Leimere Park Aarberg, Aarberg

In a prime location in Aarberg, a commercial building has been constructed for different needs and tenants from various sectors. The building's calling card is the facade made of silver fir cladding with a green color scheme., Aarberg



Warehouse and production hall, Niederglatt

Hall 95 in Niederglatt combines storage and production space with residential use on the upper floor. Large column-free storage units allow flexible use., Niederglatt



Giessliweg extension, Basel

The apartment building was extended by three floors and forms the end of a row of houses from the 1980s. We were allowed to accompany englerarchitekten gmbh sia in the planning of the timber construction as specialist planners., Basel



Limeco Hybrid Power Plant, Dietlikon

Limeco's new power-to-gas plant makes a positive contribution to climate change. It will produce renewable gas from waste and wastewater and feed it into the grid from winter 2021-22. From the parking ceiling upwards, the plant building is a pure timber construction., Dietlikon



Rénovation Caritas Jura, Delémont

The project for the renovation of the Caritas store Jura includes the renovation of the roof of building B and the construction of a new first floor slab within the existing building., Delémont



QuarTierhof Höngg, Zürich

The QuarTierhof Höngg is a small farm in Zurich-Höngg. It is a meeting place for people in the neighborhood who are interested in nature, agriculture and animals., Zürich



Production hall von Siebenthal Holzbau AG, Mauren TG

The company von Siebenthal Holzbau AG from Mauren TG has extended its premises with the construction of the new production hall., Mauren TG



New construction RFSM Building G, Fribourg

To accommodate all the vehicles of staff and visitors, the mental health network expanded its site in Villars-sur-Glâne with a parking garage. On the attic floor, 1150m² of practice rooms and meeting rooms were created in wood construction., Fribourg



VIDIT workshop, Bubikon

With the new construction of the workshop, a representative and sustainable company headquarters has been built for the Hustech company. A skeleton structure and beams and columns made of beech wood and TS3 technology reflect the innovative spirit of the company., Bubikon



Conversion Alte Dorfstr. 22, Affoltern a. A.

In the village center of Affoltern am Albis, the residential and commercial building with the former old Schmitte on the first floor is to be preserved. Timbatec was responsible for the timber construction planning and fire protection supervision and supported the building physics with the sound insulation., Affoltern a. A.



Bernapark extension, Deisswil

New life is being breathed into the former cardboard factory in Deisswil near Bern. Thanks to the multi-storey addition of wooden floors and the conversion of the existing factory buildings, a new quarter is being created., Deisswil



Conversion Coop City St. Annahof, Zürich

The Coop department store St. Annahof on Zurich's Bahnhofstrasse reopened in November 2019 after eight months of renovation. Timbatec inspected the ceiling structures of the upper two floors. In addition, the stairwell was extended., Zürich



Extension Landi, Plaffeien

The sales area of Landi Plaffeien in the canton of Fribourg was doubled with the extension and conversion project - to around 600 square meters. Timbatec planned the timber construction work of the 2.9 million Swiss franc project., Plaffeien



Conversion Haldenhof, Hallwil

Two farmers took over the Haldenhof in Hallwil. They want to run the farm in an animal-friendly and ecological way and therefore planned a conversion to be able to supply the farm as independently as possible. A Besenbeiz is to complement the offer., Hallwil



Mill yard barn, Hausen am Albis

In Hausen am Albis stands the listed barn. With the renovation two new apartments could be realized., Hausen am Albis



Commercial construction Trinova, Wangen SZ

The company Trinova Nutrition Holding AG in Wangen received a new building made of wood. Timbatec planned the building with 4 floors., Wangen SZ



Commercial construction Colombo AG, Aefligen

In Aefligen, between Bern and Solothurn, a commercial building with various ancillary rooms was built. The building with a volume of over 6,000 cubic meters convinces with its load-bearing structure and the facade made of wood., Aefligen



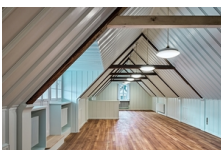
Reconstruction Restaurant Hirschenbad, Langenthal

Where once the people of Langenthal took a bath in the tin tubs, today the Burch family spoils you in the Hirschenbad restaurant. Timbatec was allowed to accompany the renovation project from the condition analysis to the construction management., Langenthal



New building workshop, Matzingen

Domestic wood dominates at the new works yard in Matzingen. The building was completed after a construction period of around one year and was officially inaugurated at the end of September 2019., Matzingen



House to the lime garden, Zürich

The Haus zum Lindengarten on Hirschengraben in Zurich was built in 1725. The renovation was carried out in 2018-2019, but with the least possible intervention in the existing building fabric., Zürich



Refurbishment SBB service facility, Biel

The approximately one hundred year old service facility of the SBB in Biel is a listed building. Timbatec analyzed the condition of the wooden roof structure and worked out the renovation options in cooperation with the monument preservation authorities., Biel



Wohnüberbauung «sue+til», Winterthur

«sue+til»: Die momentan grösste Wohnüberbauung aus Holz in der Schweiz umfasst 307 Wohnungen, ein gemischt genutztes Erdgeschoss und 200 Parkplätze. Das 6-geschossige Bauwerk ist ein Vorzeigeprojekt für den Holzbau in der Schweiz., Winterthur



New construction RFSM Building F, Fribourg

The new four-story building for the RFSM is the first hospital in Switzerland to be constructed entirely of wood. Timbatec provided all timber engineering services for this Minergie-P building, contributing to the building's safety., Fribourg



Estoppey industrial hall, Châtel-St-Denis

The municipality and Estoppey-Reber AG had the industrial hall in Châtel-St-Denis in the canton of Fribourg renovated. The roof was insulated and reinforced so that it can withstand the heavy snow loads in the future., Châtel-St-Denis



New construction Simmental Arena, Zweisimmen

The Simmental Arena, the new multifunctional hall in Zweisimmen, is largely made of Swiss wood. What's more, it does not require any interior supports at all. The roof is supported by ten 38-meter-long arched trusses., Zweisimmen



Working platform Flück Holzbau AG, Wangen

With the TW-Agil 3000, Flück Holzbau AG has installed a joinery system that is unparalleled in Switzerland. For the processing of the cut timber elements, the timber construction company commissioned Timbatec and TS3 with the construction of a wooden working platform., Wangen



Replacement new building farm store farm Waidhof, Zürich

At the Waidhof farm in Zurich, the old farm store was replaced with a modern structure and a new cart shelter was built. The whole building project was realized with HSH certified Swiss wood., Zürich



Gfellerhof, Stettbach ZH

At the Gfellerhof in Stettbach near Zurich, a feed store and a coach house were each replaced with a larger structure. In addition, the existing barn was structurally strengthened., Stettbach ZH



Increase Loepfe Brothers Ltd, Wetzikon

The factory building of the internationally active Loepfe Brothers Ltd in Wetzikon ZH has reached the limit of its capacity. In the addition to the production hall, 2800 square meters of modern office space were created, thus ensuring the company's space requirements., Wetzikon



Addition of stories Hospital region Oberaargau SRO, Langenthal

The intensive care unit of the Oberaargau Region Hospital in Langenthal has reached the limits of its capacity. Thanks to a wooden extension, the hospital now meets the increased space requirements., Langenthal



Extension Lämmerenhütte, Gemmi

The Lämmerenhütte of the SAC was extended by five meters. The building material was flown to the hut by helicopter., Gemmi



Extension workshop, Gurmels

The municipality of Gurmels in the Lake District of Fribourg recently opened a new workshop hall. The timber structure measures 28 by 21 meters and can be opened almost completely on one side - a challenge for Timbatec's timber engineers in terms of building bracing., Gurmels



Freeway depot, Loveresse BE

The highest precision was required for the workshop on the A16 freeway in Loveresse in the Bernese Jura. The timber construction elements had to fit exactly because of the enormous dimensions of the 150-meter-long hall., Loveresse BE



Forestry yard, Buchs AG

For over 75 years, the Suhr-Buchs Forestry Administration has been looking after and managing the forests of the municipalities of Suhr and Buchs. In 2016, the forestry workshop was rebuilt and a new firewood store was built., Buchs AG



New training center for the sport of polo, Seuzach

The Polo Park Zurich has relied entirely on wood as a building material for its new center. Both the operations building and the various stable buildings with the horse stalls have been realized as timber frame buildings., Seuzach



New building: timber merchant OLWO Otto Lädach, Worb

OLWO, a timber processor and trader, needed a new office and exhibition building. Thus, a dominant four-story wooden building has been created in the middle of Worb., Worb



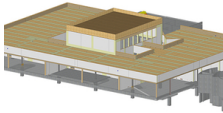
House of Switzerland, Sotchi, Milano, Zürich, Davos, Rio, ...

For "Presence Switzerland", the concept was developed for a multi-use platform with adequate space (730 m²) to serve public diplomacy and to promote Switzerland's interests at major international events. Timbatec constructed a robust, demountable timber construction system for this purpose., Sotchi, Milano, Zürich, Davos, Rio, ...



Johnsonhaus, Köniz

In the heart of the municipality of Köniz, in a sunny location close to the center, a residential and commercial building has been realized on Neuhausplatz. Not only the facade but also the supporting structure is made of wood., Köniz



Increase Bell AG, Basel

At Bell AG on Elsässerstrasse in Basel, new offices and an auditorium were built on the 5th floor, above the existing production facility., Basel



Mobilcity Competence Center Car, Wankdorf Bern

It is unusual for ten associations in one industry to join forces to create a joint training center. This is exactly what the automotive associations did in Bern Wankdorf on Wölflistrasse. They built a new building as a training and further education center for the automotive industry in Switzerland. Timbatec was commissioned for the demanding planning of these halls., Wankdorf Bern



Conversion Haus zum Kiel, Zürich

The baroque Haus zum Kiel is located on Hirschengraben in Zurich's old town. The building exhibited severe subsidence and various damages to the building structure and supporting structure. Timbatec AG was commissioned to examine load transfer methods and define measures for the conversion., Zürich



New construction of Mosimann and Stromer Campus halls, Oberwangen BE

The two symmetrically arranged halls are located on Freiburgstrasse in Oberwangen. The cubes with the dimensions 50x26x12 m shape the image of the landscape next to the highway., Oberwangen BE



Warehouse Thommen Furler, Rüti bei Büren

A new storage hall was designed for the acids and alkalis to be stored by Thommen Furler AG, which can cope with the high demands of aggressive chemicals., Rüti bei Büren



Connecting bridge Thommen Furler, Rüti bei Büren, Bern

A pipeline bridge had to be designed for the transport and filling of the chemicals from the storage facilities via the warehouses to the railroad tracks, which would withstand the high demands of the chemicals such as acids and alkalis., Rüti bei Büren, Bern



New construction industrial hall Schwarz AG, Schüpbach

A commercial hall with a storage section, a gallery floor and an office wing according to the Minergie standard - Timbatec makes it possible., Schüpbach



New construction salt storage hall, Mühlethurnen

Due to damage to the concrete and steel structure, the existing salt storage hall at the road inspectorate's depot in Seftigen had to be replaced., Mühlethurnen



New construction of residential and commercial building Hohlstrasse, Zürich

The seven-story building is an extension to the existing commercial building and spans it cantilevered., Zürich



New construction warehouse Jungheinrich AG, Hirschthal, Schöffland

New storage resources were needed at the Jungheinrich company site in Hirschthal. To achieve this, a warehouse with a large forecourt roof in wood was planned., Hirschthal, Schöffland



Extension of industrial building Lanz-Anliker AG, Rohrbach

The textile processing company Lanz-Anliker AG in Rohrbach needed additional space for processing technical textiles and for offices. Clarifications showed that an addition could be built on top of the existing building., Rohrbach



New construction roofing Creabeton, Lyss

Creabeton Lyss manufactures a variety of concrete semi-finished products, including various interlocking blocks for use in horticulture., Lyss



Redevelopment Höchhus, Steffisburg

This property in Steffisburg belongs to the Höchhus Foundation and is a listed building. The Höchhus is one of the oldest buildings in the village., Steffisburg



New construction production and warehouse Comestibles Pernet, Zweisimmen

Construction of a production and storage hall for the company Pernet in Zweisimmen. The execution planning and realization was carried out by the company Hector Egger in Langenthal as general contractor., Zweisimmen



New construction indoor swimming pool, Frutigen

In 2006, the Frutigen indoor swimming pool was destroyed by fire. The demolition of the supporting structure made way for a new indoor swimming pool. In order to design a contemporary indoor swimming pool, the client invited an architectural competition., Frutigen



Wood construction hall Ramseier, Grenchen

The company Ramseier Technologies AG is active in the field of industrial powder coating technology and is building a new hall in Grenchen., Grenchen



New construction of Uetendorf workshop, Uetendorf

As part of the renovation of the Werkhof Uetendorf, the need for additional rooms was identified. These rooms were planned in an additional two-story building., Uetendorf



New construction mountain house Morenia, Saas-Fee

The new building of the 2-storey mountain restaurant Morenia in Saas-Fee is located at an altitude of 2'570 m.a.s.l. and measures approximately 43 x 21 m., Saas-Fee



Reconstruction-renovation tithe barn, Grundbach area, Thun

The tithe barn was one of the oldest preserved buildings in the city of Thun. After a fire in 1999, it had to be renovated in cooperation with the preservation of historical monuments of the canton of Bern., Thun



MFH Supply Center Weier, Schwarzenegg

The municipality of Oberlangenegg decided at the beginning of 2000 - it was the time when Lothar raged - to build this project in wood. With a supply center that should be deliberately dominant and quickly recognizable, Schwarzenegg gets a village center that represents and enlivens the village image., Schwarzenegg



Reconstruction Bälliz 29, Thun

The existing building in the center of Thun was converted into business premises and apartments. On the 1st floor, three high reinforced concrete girders were installed, which protruded from above about 70 cm into the clearance gauge. The planned store was to be column-free with a smooth soffit. The existing beam layers were to remain unchanged., Thun



Warehouse Steiner AG, Walkringen BE

The log yard of the company Steiner Sägewerk und Holzhandel is located in a hollow between the railroad line and the road. On a width of approx. 60 m and a length of 400 m, a superstructure and logistics concept for the future operation had to be created., Walkringen BE
