

Reference projects

Additions



Giessliweg extension, Basel

The apartment building was extended by three floors and forms the end of a row of houses from the 1980s. We were allowed to accompany englerarchitekten gmbh sia in the planning of the timber construction as specialist planners., Basel



Addition of a storey at Widmerstrasse 73, Zürich

The four-story residential building in the quiet district 2 in Zurich was extended with one floor. Timbatec planned the attic floor in timber construction., Zürich



Addition Birkenrain, Zurich Retirement and Nursing Home, Bellariastrasse 21, Zürich

The Birkenrain retirement and nursing home has 35 single rooms and was reopened in May 2021 after a complete renovation. Timbatec supervised the extension and was responsible for the QS fire protection for the whole building (QSS3)., Bellariastrasse 21, Zürich



School Richterswil, Field 1+2, Richterswil

Thanks to the extension of the existing school, the new premises again offer sufficient space for the increasing number of students., Richterswil



Conversion and extension at Eidmattstrasse 14, Zürich

The residential building at Eidmattstrasse 14 in Zurich, built in 1967, was renovated and two storeys were added., Zürich



Addition of storey Dohlenweg 28+30, Zürich

Centrally located in Zurich Oerlikon, the building offers modern and appealing rental apartments after total renovation and addition of new floors., Zürich



Addition of storey Erikastrasse 11, Zürich

The four-story solid building in Zurich was raised in timber construction in the course of renovation. The roof shape with large spans and kink in the roof area posed a challenge for statics and construction. Timbatec also supervised the fire protection and the solid construction statics., Zürich



Conversion Alte Dorfstr. 22, Affoltern a. A.

In the village center of Affoltern am Albis, the residential and commercial building with the former old Schmitte on the first floor is to be preserved. Timbatec was responsible for the timber construction planning and fire protection supervision and supported the building physics with the sound insulation., Affoltern a. A.



Addition of another storey to MFH Schäfligraben, Wallisellen

The Schäfligraben development in Wallisellen consists of three apartment buildings. With the increase in wood up to additional two floors, 15 new bright apartments in wood, with exposed wood ceiling, have been created., Wallisellen



Bernapark extension, Deisswil

New life is being breathed into the former cardboard factory in Deisswil near Bern. Thanks to the multi-storey addition of wooden floors and the conversion of the existing factory buildings, a new quarter is being created., Deisswil



Addition of another floor to MFH "In der Ey, Zürich

The apartment buildings "In der Ey" in Zurich are part of a development from the 1950s. As part of a complete renovation, the buildings were extended with an annex and a storey., Zürich



Increase Greulich, Zürich

In the middle of the city of Zurich, two apartment buildings were raised. The additional floor provides space for 8 smaller apartments., Zürich



Addition of another storey to MFH Zwinglistrasse, Zürich

The modest worker's dwelling from the late 19th century was rebuilt and raised. Timbatec accompanied the necessary strengthening of the load-bearing structure as specialist planner., Zürich



School building extension Gallenbühl, Aegst am Albis ZH

Thanks to an extension and a storey addition, the Gallenbühl school building in Aegst am Albis once again offers sufficient space for all pupils. Timbatec was responsible for the statics and fire protection., Aegst am Albis ZH



Addition of storey Gartenstrasse, Zürich

Thanks to a new facade and an extension, the office building of Lienhardt & Partner Privatbank in Zurich appears in new splendor. Timbatec was responsible for the timber engineering services., Zürich



Increase Loepfe Brothers Ltd, Wetzikon

The factory building of the internationally active Loepfe Brothers Ltd in Wetzikon ZH has reached the limit of its capacity. In the addition to the production hall, 2800 square meters of modern office space were created, thus ensuring the company's space requirements., Wetzikon



Vogelsang extension, Wetzikon

In the middle of the city of Wetzikon in the canton of Zurich, a housing estate was renovated. By adding wooden floors, 36 new residential units were created on top of the prefabricated buildings designed by the architectural icon Ernst Göhner., Wetzikon



Addition of stories Hospital region Oberaargau SRO, Langenthal

The intensive care unit of the Oberaargau Region Hospital in Langenthal has reached the limits of its capacity. Thanks to a wooden extension, the hospital now meets the increased space requirements., Langenthal



Addition of stories elementary school, Köniz

Köniz is growing overdimensionally. In no municipality around Bern has the population grown more in recent years than in Köniz - and it is getting younger and younger. Two existing school buildings were therefore each extended by one storey in wood., Köniz



Saumacker, Zürich

Not far from Zurich Altstetten train station, the PWG Foundation had an apartment building modernized and extended. Timbatec was allowed to accompany the construction project as timber engineer and fire protection planner., Zürich



Densified building in the small town, Lenzburg

More living space is in demand not only in the large centers, but also in smaller towns that are steadily increasing their population. Take Lenzburg, for example. In order to create more apartments, a commercial building was extended by two floors in timber construction., Lenzburg



Seestrasse extension, Zürich

The object is a four-story apartment building near Lake Zurich. The first floor is used for offices, the upper floors serve as apartments. The attic is undeveloped., Zürich



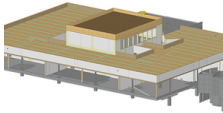
Othmarstrasse extension, Zürich

A one- and two-story addition completes a four-story office building of solid construction in Zurich's Seefeld district., Zürich



Addition of a storey Lessingstrasse, Zürich

The addition of a storey to the existing office building at Lessingstrasse 3 in Zurich proved to be a challenge, but Timbatec solved it in a well thought-out manner. Today, the building presents itself with two additional floors in timber construction. Here 5 new apartments were created., Zürich



Increase Bell AG, Basel

At Bell AG on Elsässerstrasse in Basel, new offices and an auditorium were built on the 5th floor, above the existing production facility., Basel



Increase International School Zurich, Wädenswil

The Zurich International School in Wädenswil decided to extend its school premises by one floor to provide additional classrooms. The large skylights stand out in particular, which posed a challenge to the load-bearing concept., Wädenswil



Addition to school Walkringen, Walkringen

In order to create more school space, the school Walkringen gets an additional floor a new outside lift. To achieve this, the existing roof structure was demolished and a new attic floor was added to the building., Walkringen



Addition of stories Rheinfeldenstrasse 12/14, Birsfelden

Ideas, requirements and implementations are not always easy to combine. But in some cases it succeeds!, Birsfelden



Extension/Renovation MFH Salvatorstrasse, Zürich

The existing apartment building on Salvatorstrasse underwent a total renovation to create more space, comfort and aesthetics. The living room extension consists of hollow box elements, which rests on a post and beam construction at the front and is clad with a glass front., Zürich



New construction of residential and commercial building Hohlstrasse, Zürich

The seven-story building is an extension to the existing commercial building and spans it cantilevered., Zürich



Florastrasse 28/30 extension, Zürich

A renovation with the aim of increasing the interior and exterior space. How should this succeed?, Zürich



Renovation MFH Segantinistrasse, Zürich

The apartment building on Segantinistrasse in Zurich was raised in the course of total renovation and upgraded to the Minergie-P standard with a prefabricated new building envelope. The complete new building services are integrated in the prefabricated wooden elements, which were placed in front of the existing exterior walls., Zürich



Extension/expansion of blood donation center, Aarau

The occupancy capacity of the SRC Blood Donation Center in Aarau had reached its maximum limit for quite some time., Aarau



Extension of industrial building Lanz-Anliker AG, Rohrbach

The textile processing company Lanz-Anliker AG in Rohrbach needed additional space for processing technical textiles and for offices. Clarifications showed that an addition could be built on top of the existing building., Rohrbach



Addition of storey to apartment house Bruhin, Pfäffikon SZ

On top of the existing two-family house in a natural location, new living space was created by a one to two-storey extension in timber frame construction. Special features are the underbeam-free flat roof construction and the floor-to-ceiling glass fronts., Pfäffikon SZ



Addition of storey, extension Migros, Zofingen

The existing Migros Zofingen building, which was getting on in years, was to be extended., Zofingen



Filling of residential and commercial building Weststrasse, Zürich

The property at the intersection of Weststrasse and Birmensdorfstrasse was raised to create additional apartments and office space. The extension was executed in timber construction. Something special is the cantilevered, column- and purlin-free roof construction., Zürich



Renovation/addition of storeys to MFH Heizenholz, Zürich

In the case of the two Heizenholz apartment buildings in Zurich, built in 1963, the traces of time were clearly visible after more than 40 years of operation. The thermal standards of the facades and windows were no longer up to standard. In view of rising energy prices, the building owner decided to completely renovate the facade. In order to upgrade the buildings and create new living space, it was also decided to add an additional storey. This resulted in two modern, contemporary attic apartments., Zürich



Redevelopment Höchhus, Steffisburg

This property in Steffisburg belongs to the Höchhus Foundation and is a listed building. The Höchhus is one of the oldest buildings in the village., Steffisburg
